

Derby Dripker

NOW OVER 12,500 COPIES TO OVER 250 PUBS



HELPING BEER LOVERS SPEND MONEY WISELY

ISSUE No 81

SEPTEMBER 2000

FREE



Blue Bell is first pub for Shardlow Brewery

Ambitious local microbrewers, Shardlow Brewery of Cavendish Bridge, have acquired the Blue Bell in Melbourne as their first pub.

Ron Morgan, who has been searching for the right pub for some time, bought the Blue Bell, close to Melbourne Hall, in late June and has already been serving excellent pints of *Shardlow Best*, *Revd Eaton* and *Golden Hop* all at £1.70 a pint. A guest beer may soon also feature and Ron has great hopes for it's success.

His son, Shardlow brewer Kevin Morgan (pictured toasting the pub's success) is the licensee and with David Dale on hand also, the family concern means the venture is on a sound footing.

The bar is to be revamped strictly for the ale drinkers whilst the restaurant side will develop gradually.

Locals are no strangers to Shardlow beers as as the house

ale *Blue Bell Wallop* was based on *Revd Eaton*, and has been supplied to the Blue Bell for a couple of years. The nearby Alma also took Shardlow beers before W&D clamped down.

Shardlow beers are also at the Annwell Inn at Boundary, Smisby (formerly Mother Hubbards) and the Roebuck in Uttoxeter as they expand their free trade.

Enjoy the finest range of
QUALITY
cask conditioned beers
at the award winning

Brunswick Inn

Derby's original
Traditional Brew Pub

- Home Produced Lunches
- Evening Buffets
- Non-smoking Room
- Function Room
- Family Parlour
- Conference Facilities
- Brewery Tours by arrangement

For details phone:
01332 290677

Falstaff scoops pub award

The Ivor Clissold Award for beer quality has been won by the Falstaff, Silverhill Road, Normanton.

As a one-off this year delegates of the National CAMRA AGM, who descended on Derby in their hundreds in April were asked to vote for the city pub which served the best beer during their stay.

The attraction of the home-brewed ales drew many visitors to Peter and Ady Parkes hostelry, and congratulations are due to a worthy winner. The runners-up in the contest were the Rowditch, Uttoxeter Road and the Peacock on Nottingham Road, where Dave Townsend holds court with his fine Pedigree.

The Falstaff Brewery has been stretching its wings in the free trade lately with the quaffable and cheap *Summer Ale* locally having been available in the Crompton, Smithfield, Blessington Carriage and Dead Poets Inn. It was the first to sell out at both the CAMRA AGM beerex and the Newark beer festival.

The brewery are now also running the Loudon Arms, off Normanton Road. Falstaff ales are on the bar, previously a wilderness of keg beers. The Loudon now offers a full range of home cooked dishes every lunchtime, great value ale and food.

lightbulbs, so run down it had become.

The Burdett is not being delicensed as the family will continue with the bed and breakfast side of the business. It was indeed sad to be in the pub that Sunday lunchtime as the death-knell of an English inn was sounded. The last of the lemonade ran out and an announcement was made "no more shandies."

This closure is yet another warning shot across the bows of the country pub. They are precious and a pleasure to drink in, but not these days a permanent rural fixture.

Rural roadside inn closes

The Sir Francis Burdett, on the bend of the Derby-Melbourne road near Kings Newton, closed its doors for the last time on Sunday 13th August. The pub was a champion of cask ales and guest beers in the dark 1970s days of keg and its lonely roadside location suggests a touch of Yorkshire Moors rather than South Derbyshire.

Dwindling trade is the reason cited by licensee of 23 years, John Glaze for taking the decision which has taken regulars by complete surprise. Even at the end John had a choice of ale of Bass, Jennings Cumberland Ale, Tolly Cobbold Bitter and Old Peculier. "People have just stopped coming in" he said.

The Francis Burdett, (above right) with its eccentric mix of clutter and collection of single malts, is exactly the kind of pub we should not be losing. The beers may have been a touch hit



or miss but it had character and individuality. Named after the former local MP it once boasted a cowshed, piggery, skittle alley and rhubarb house.

It was traditionally run by market gardeners before John Glaze bought it from Bass in 1977, opening up with no beer or

THE FALSTAFF

FREE HOUSE
&
BREWERY

Silverhill Road,
Normanton

A CONTINUALLY
CHANGING RANGE OF
GUEST ALES AT
REASONABLE PRICES

BREWERY TOURS BY
ARRANGEMENT

OPEN ALL DAY

TEL 01332 342902

Dead Poets Inn

Holbrook

Seven traditional ales
Poet's night - 1st Tuesday of every
month

Derby CAMRA Pub of the Year 1999

tel.: 01332 780301

Jan & Steve

You'll have a happy time at

The Rowditch Inn
246 Uttoxeter Road, Derby

Changing guest beers
and a large selection
of fruit wines

Beer Festival 27-29 October

Vanished pubs of Derby

1. Cheshire Cheese, St Peter's Street

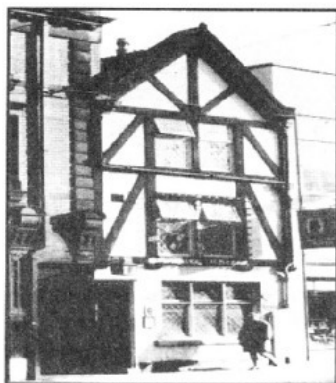
As you approach the Spot from the north, up St Peter's Street there is a mock-timbered building, now the home of Shelter. Nearly half a century ago it was a popular, bustling town centre eighteenth-century inn, needlessly closed by Allied. It was called the Cheshire Cheese.

The Cheese (right) was entered from the alley at the side, Bloom Street. Some of this ginnel is still there, indeed the pub name, painted on the wall, survived until the mid-1980s as did the double-yellow lines on this improbably-narrow thoroughfare which once ran to Albion Street.

Once owned by Alton's the pub featured bar-billiards, and had an upstairs bar known as the 'Mouse Trap' where the Ind Coope beers were sold only in half-pint glasses until it's mysterious closure in the summer of 1975, when still a popular calling place.

It became a shop, then a pizza parlour in the late 1980s, the rooms not much changed. It closed in the 1990s and was later a new age trinket shop before Shelter took residence.

It is not beyond the realms of possibility to think that the



Cheshire Cheese could maybe one day be reopened as a pub, it could be a good-looking tavern, at least externally, and would be a valuable reinstatement to the Spot drinking scene.

Brunswick beer festival time

Derby's pioneering free house and brewpub, the Brunswick Inn on Railway Terrace is staging its 13th Annual Beer Festival from Friday 29th September to Tuesday 3rd October.

Opening hours for this popular event are from 11-11, with 12-10.30 on the Sunday. All the festival ales will be served directly from the cask.

??? BEER QUIZ ???

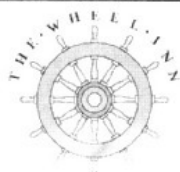
How much do you know about beer?

- 1 The 4 ingredients needed to produce beer are: malted barley, hops, yeast and ?
- 2 Pale, crystal and chocolate are all types of what?
- 3 What are traditionally the containers for storing hops found in a brewery?
- 4 What is the difference between cask beer (real ale) and keg beer?
- 5 What is unfermented beer in a brewery called?
- 6 Which gas, natural to beer, is a by-product of the fermentation process created by yeast as it

- turns sugar to alcohol?
- 7 How many firkins make up a barrel?
- 8 How many pints in a kilderkin?
- 9 How quickly should a casks of ale be consumed after venting if it is to be enjoyed before oxidation sets in?
- 10 How often does your local landlord clean the beer lines between the cellar and the bar?

How many did you know?

The answers are located on the back page.



Chapel Street, Holbrook
Tel 01332 880006

A warm invitation and an open fire awaits you at this friendly hostelry. Home cooked food and a choice of real ales always available.

Steve & Jackie Hughes welcome customers old & new to the

RED LION



Chellaston, Derby
Pedigree, Bass and Guest ales
01332 705437

Out of the Furnace

No it's not that he can't stand the heat, it's just time to move on. John Barnes, the well-liked licensee of the Furnace in Duke Street, Derby, has moved out to Draycott-in-the-Clay with his new wife Dawn, to take over the running of the Swan, where the emphasis will be as much on the food as the drink.

"It's a different place altogether and the move is a bit of a gamble" said John, "but we're determined to make a go of it."

John Barnes moved into the Furnace in August 1994 to replace Ray Watson (Watto). Before that he kept the **Corner Pin** at Chellaston, where he rose to second place in the breweries guild of Master Cellarmen for his top quality Draught Burton Ale.

It was at his previous pub, the **White Horse** in the Morledge that he let the press into his secret for calming new beer down the cellar. He talked to it, just as Prince Charles talked to his fruit trees to make them fruit better. John recalls with amusement the landlord of the White Swan, Littleover, who was also a Master Cellarman, went one better, "I don't need to talk to my beer" he said to the newspapers, "It speaks for itself!"

At the **Maple Leaf** in Newark, Barnes brewed 180 gallons of his own beer every week, which was one of the attractions that drew him from the **Warren** at Stapleford, a pub he moved to from the **Byron** in Upper Dale Road, Normanton. That was the pub where John started out on May 6th 1977, when the Byron had real beer.

He moved into the Furnace as a new divorcee and, John says, the move was good for him. Now

he moves out with a new wife ("Her maiden name was Bass, I thought her father owned a brewery somewhere!")

They will be sorely missed, not only be the locals but by others who went out of their way to drink the well-kept Kimberley in a pub that has regularly featured in CAMRA's national *Good Beer Guide*.

It is not known at the time of going to press who will succeed them.

Visit our unique cellar bar at
The Flowerpot

King Street, Derby

Tel: (01332) 204955

Try our continually changing range of real ales in the warm surroundings of a traditional town pub

Hot food Monday to Saturday
Sunday lunches a speciality
LARGE FUNCTION ROOM

RAW PROMOTIONS PRESENT LIVE AT
THE FLOWERPOT

King Street, Derby Tel: 01332 204955

THURS 14th SEPT	MAN	£7/£6 conc
FRI 15th SEPT	THE FOUR BROTHERS	£7/£6 conc
SAT 16th SEPT	GINZ AND ROSIE	£6/£5 conc
SUN 17th SEPT	BON RAVANA & THOMAS LYNCH	£6/£5 conc
SAT 30th SEPT	PAUL LAMB & THE KINGSNAKES	£7/£6 conc
MON 2nd OCT	ANDY WHITE	£5/£4 conc
THURS 5th OCT	GLENN THIBROOK	£5.00
FRI 6th OCT	MANNING STIMPSON & THE DANITES	£6/£5 conc
SAT 7th OCT	THE ELIZA CATHY BAND	£9.00
SUN 8th OCT	BERT JANSCH	£7/£6 conc
FRI 13th OCT	ALL ABOUT EVE	£8.00
SAT 14th OCT	CHICKEN SHACK	£7/£6 conc
MON 16th OCT	VIN GARBUTT	£6.00
TUES 17th OCT	FRED ZEPPELIN	£6/£5 conc
WED 18th OCT	WHO'S WHO	£6/£5 conc
SAT 21st OCT	ARE YOU EXPERIENCED	£6/£5 conc
MON 24th OCT	MARTIN CATHY	£6/£5 conc
FRI 27th OCT	THE CRAZY WORLD OF ARTHUR BROWN	£8.00
SAT 28th OCT	RE-GENESIS	£7/£6 conc
SUN 29th OCT	MARTIN SIMPSON	£6/£5 conc

REAL ALES DOORS 8PM

Advance Tickets Are Available From:
BPM, 36 The Strand Derby Tel 01332 382038
The Flowerpot Tel 01332 204955
RAW PROMOTIONS Tel 01332 834438
24 HR CREDIT CARD HOTLINE: 0115 912 9000
RAW PROMOTIONS WEB SITE:
<http://www.flowerpot.co.uk/rawpromo>

Protect YOUR Pleasure Join CAMRA now!

APPLICATION FORM

I/We wish to join the Campaign for Real Ale Limited and agree to abide by the Memorandum and Articles of Association. I enclose a cheque for £..... Rates are: single £14.00, joint £17.00, OAPs and under-26s £8.00 (£11.00 joint), overseas £18.00 (joint £21.00). If under 26 please add date of birth:

Name(s):

Address:

.....Post Code

SignedDate

Please send your remittance (payable to CAMRA Ltd) with this completed application form to: Membership, CAMRA, 230 Hatfield Road, St Albans, Herts, AL1 4LW.

Derby Drinker

Crich makes a stand

Next time you visit the National Tramway Museum at Crich, take a look at the old façade of the former Derby Assembly Rooms near the entrance. It was removed



brick-by-brick in the early 1970s and it once had a clutch of Derby pubs for company, the likes of the Old Wine Vaults and the Horse and Trumpet. Those have gone but it still nestles amongst a clutch of cracking Kimberley pubs as a stroll around Crich bears out.

The closest is the Cliff Inn, (above) where Roy and Beryl Calladine have been mine hosts 26 years. The pub has a superb outlook with the view over the hills and valleys a dreamy sight on a late summer evening as the sun sets. Kimberley Mild and Bitter, plus a seasonal guest are on offer and the Cliff is a long-standing *Good Beer Guide* entry.

Interesting sign too.

A few minutes walk towards the church brings you to the eccentric but welcoming Jovial Dutchman where the Hardy & Hansons range is on electric dispense, but nonetheless traditional for it.

The Dutchman (below) is really two pubs in one as the licensees since 1977, the Killers, run separate his and hers bars. Downstairs the landlady holds sway whilst upstairs is the tap room. Known locally as the Young Persons Room, the oldest regular is 78! Darts, dominos and fishing nights take place up aloft.



The pub name is unique. Folklore has it that it was inspired by a Dutch engineer who worked the mining or canal structures at nearby Wakebridge, opening the pub for his workforce. He's still around apparently as the landlord has seen his ghostly black apparition in the tap room.

Downhill into Crich village is

Booze news from Ripley

As the Derby branch of CAMRA are to hold a social in Ripley soon it is perhaps a good time to give a wider number of people an idea of what can be expected beer-wise in the town.

The *Good Beer Guide*-nominated **Rose & Crown** is a Batemans house with XB and XXXB in generally top condition. Among its many attractions is a skittle alley, great when the weather permits.

Other pubs worthy of a visit are the **Pear Tree**, Market Place (Kimberley Classic, mild & bitter), and the **Woodman** on Maple Avenue, a *GBG* try-also with Kimberleys range. Just down Church Street we have the

the Black Swan. The Kimberley bitter and mild is in good form in a pub bustling with bric-a-brac, including *Peak Practise* memorabilia (that cast certainly get around a bit). There is a resident piano and the pub is seeking a player.

On the other side of Crich, the Kings Arms completes the pubs of the village.

Old and new hosts compliment a healthy drinking village and in an era where rural boozers are in jeopardy, Crich is certainly not making its last stand.

Cask breather Taste Challenge results

At Derby Beer Festival, drinkers were asked if they could detect if a cask breather was being used on a beer or not.

2 handpumps were labelled A and B. The chosen beer was Hopback Summer Lightening. The breather was in place for 4 days of the festival whilst the other beer was always fresh. The breather was on pump A and the question asked 'Which one do you think has the cask breather?' Of 476 drinkers (209 of them CAMRA members), 170 thought Pump A, 224 pump B and 82 didn't know. The debate goes on.

Nags Head (Bass) and the Talbot

(Theakstons XB/Pedigree) opposite each other. A short walk down Lowes Hill takes you to the **George (Free)**. There's also the **Red Lion**, Market Place's Weatherspoons pub.

On the outskirts of the town the **Thorn Tree** at Waingroves is a free house with a warm welcome, and at Lower Hartshay the **George** has Kimberley whilst the **Gate** is free.

If you are in the area please join CAMRA for the skittles & social at the Rose & Crown on Tuesday 26th September. Otherwise Ripley is worth a visit any time.

NEWS

The **Seven Stars** in King Street has a new licensee. Dave Barber from the Maypole, Brook Street, has taken over. Pedigree has been restored and Dave says he wants to restore the character to the pub.

Down at the **York Tavern** in York Street, Neil and Noreen McCready have succumbed to the grinding pressures of Enterprise Inns and have left. They had just got the guest beer range back up to a varied choice and new licensee, Vaughan Bednall aims to continue in this vein. Guest beers have also appeared on the menu in two Shardlow pubs, the **New Inn**, where guests have included Elgoods *Golden Newt*, and the **Navigation**, where the local Shardlow Brewery have had their *Narrowboat* on the bar. Another pub experimenting is the **George and Dragon**, High Street, Belper (formerly the George). Adnams *Broadside* is amongst the guest beers here.

A pub returning to cask from the keg and smooth wilderness is the **Dog and Partridge** on Bedford Street, indeed Burtonwood brewery have been making a concerted effort of late to get more cask beer into their pubs in the city. Down the hill in the same street as the Dog, at the **Bedford Arms**, there is a monthly guest beer policy. August's beer was Manchester brewery Hydes *Jeckyll Gold* (4.3%). Meantime the **Liversage**, Old Nottingham Road remains for sale free of lease and the **Durham Ox**, Burton Road is closed.

Healthy Spa

Despite initial fears when it changed hands a few months ago, the Olde Spa on Abbey Street is as good as ever in both atmosphere and beer quality. In fact it some ways it's better as in addition to Pedigree and Burton Ale there's always one and sometimes two guest beers on offer. The pub is currently being refurbished and will probably be open all day upon completion.

MUSEUM BREWING COMPANY



The Flavour Of Our Heritage

Speciality cask beers and heritage ales from the Bass Museum archives.

Included in our portfolio are:

No. 6 Mild Ale	3.9%
Victoria Ale	3.5%
Officers	4.0%
"E"	4.8%
Masterpiece IPA	5.4%
P2 Imperial Stout	8.0%
No. 1 Barley Wine	10.5%



Contact Chris Voyce
Sales Manager ext. 3565
Museum Brewing Company
PO Box 220, Horninglow St.
Burton upon Trent DE14 1YQ
Tel: 01283 511000
Fax: 01283 513509
www.bass-museum.com
E-mail: brewery@bass-museum.com

From the team that brought you
the Flower Pot

The Smithfield

Meadow Road
on the banks
of the Derwent

Quarter mile from Train Station
Quarter mile from Market Place
LARGE CAR PARK

Phil and Mary wish you a warm welcome at the

Sun Inn

St Giles Road, Normanton.

UNDER NEW TENANCY

Fridays - Singalong with Joe at the Piano
Every Saturday - Entertainment

Old Silk Mill

Full Street, Derby

seven real ales

Full range of food served
9 am - 11 pm

OPEN ALL DAY

Tel.: 01332 369748

DERBY BEER FESTIVAL

GLASSES FOR SALE

1988 - £5, 1981 - £12

Both mint condition.

Phone Alan: (0115) 8770148

Wolves targeted

As we go to press it has emerged that Wolverhampton & Dudley brewery, which acquired both Marston's and Mansfield, has itself become a target of a predator. Robert Breare's Noble House leisure group announced a 'not unfriendly' interest in W&D, currently valued at around £350 million. It remains to be seen how this would affect the former Marston's estate locally.

23rd Derby Beer Festival proves a great success



This year's Derby Beer Festival proved a great triumph with attendance up on 1999. Both the Friday and Saturday nights sessions produced lock-outs as crowds flocked to the Assembly Rooms. Our picture shows revellers at the festival enjoying

Worthy return at Museum festival

The classic bottled beer Worthington White Shield is to be brewed by Museum Brewery, returning the famous brew to its natural home in Burton Upon Trent. Museum brewer Steve Wellington plans to launch the beer in both bottled and cask form at the Museum Beer Festival. The event runs from Friday 6th to Sunday 8th October.

TV a great Advert for the Vic

One of Derby's overlooked success stories is the Victoria Inn on Midland Place.

Andy Sewell and his staff have built up a tremendous live independent music venue here and although the pub couldn't survive without the bands, they are putting on some tasty guest beers, always a rarity at almost all gigs. Recently featured amongst the guest ales have been Taylor Landlord, London Pride, Black Sheep Bitter, Woodforde's Nelsons Revenge and Wychwood Circle Charter. Sometimes guest ales are served on gravity.

On the band front there is a gig almost every night and past visitors include Half Man Half Biscuit, Spear of Destiny, 999 and the U.K.Subs.

A great attraction on Saturday 30th September is T.V. Smith, who fronted the fabulous and hugely-underrated punk band The Adverts. They made some terrific records circa 1977-78 including *One Chord Wonders*, *Bored Teenagers* and *The Great British Mistake* although they are probably best known for the hit *Gary Gilmores Eyes*.

Good beer and a lively night out, at only £3 how can you avoid it?

Pedigree and Ivory?

Over at the Junction Tavern in Junction Street, Derby they have installed a piano into the pub. Anyone capable of playing the said piano for 15 minutes, to the satisfaction of the landlady and landlord on a weekend evening, will be presented with a free pint!

CAMRA, Clubs and Real Ale

The week 9th-16th September was designated CAMRA Week of Action to promote Real Ale in Clubs, an important yet generally unacknowledged market for traditional beer. It is an area which has been slower than pubs to provide cask ale but not every social club member is solely interested in cheap keg beer and bingo.

So if you are a club member who would like to see tasty cask ales in your club then send for the leaflet *Your Club Your Choice* from the following address.



Campaign for Real Ale
230 Hatfield Road
St Albans
Hertfordshire AL1 4LW
Tel 0845 60 30 20 8
Or e-mail camra@camra.org.uk

BEER QUIZ ANSWERS

1. Water 2. Malt 3. Hop pockets 4. Cask beer is a living beer, containing its natural elements, keg beer has been subjected to filtering and pasteurisation 5. Wort 6. Carbon Dioxide 7. Four 8. 144 9. Three days 10. Once a week at least

the sounds of Quicksilver, just one band from the popular roster of entertainment. The beers went well in both the main hall and the Darwin Suite and there were 78 new CAMRA members joining at the festival, the best recruitment total since 1994.

Royal Oak Beer Festival

To celebrate the award of Derby CAMRA Pub of the Year, as reported in the last *Derby Drinker*, the Royal Oak at Ockbrook is to stage its first Beer Festival.

It will run from Thursday 12th-Sat 14th October, in the meeting room of the pub. There will be beers from more than 15 breweries, including Whim, Burton Bridge, Brewsters, Hydes, Kelham Island, Fullers, Black Sheep, Springhead, Shardlow, Wye Valley and a special brew from Cottage Brewery. Opening hours are 11.30-2.30 (lunch) and 6.30-11 (evening).

Quick off the Mark

At the recent Great British Beer Festival at Olympia, a new brewer from Newark launched its first beer. Broadstone Brewery piloted *Broadstone Bitter* (3.7%) and *Gold* (a deceptive 5%).

The launch was not, however, unique as the Alexandra in Siddals Road had the beer for sale on the same day.



Carvery and Chef's Specials board available 7 days a week

New Refurbished Bar Area Now Open
Selection Of Real Ales

Tel: 01332 881200

THE FALSTAFF BREWERY PRESENTS

THE LOUDON ARMS
(OFF NORMANTON ROAD, DERBY)

TRY OUR CONTINUALLY CHANGING RANGE OF QUALITY HOME COOKED FOOD

AVAILABLE DAILY
(SUNDAY LUNCH A SPECIALITY)

TRADITIONAL REAL ALES FROM THE FALSTAFF BREWERY ALWAYS AVAILABLE
TELEPHONE (01332 342147)

The Friargate
114 Friar Gate

tel. 01332 297065

Come and meet Roger and Penny at Friargate's finest real ale house.

Quality Selection of real ales always available

Free entertainment every Wednesday
Sept 20th BBK Sept 27th Leconk