



ISSUE NUMBER 103

WINTER 2005

FREE

# Fourth Derby Winter-Fest is upon us: 9th to 12th February

The 'Festival that Rocks' is back once more to brighten up your winter with its biggest and best line-up of beer and bands yet.

Now in its fourth great year it will run from the 9th to the 12th of February again in the Darwin Suite of the Assembly Rooms on Derby Market Place and will feature over 85 beers from all over the country and abroad. These will include every style imaginable from Bitter & Lager to Mild, Porter & Stout to Cider & Perry to Foreign Bottled Beers & Fruit Wines. We have also commissioned three unique Valentines

Ales that are being brewed especially for the Festival by local microbreweries.

Perhaps the biggest draw of the Festival though will be the exceptional line-up of entertainment that we have put together including the return of Derby favourites, the Rattlers and two top tribute bands (U2 & The Darkness) that should appeal to all tastes and age groups. But don't worry; if you do prefer your beer without the noise then we haven't forgotten you, as the beer connoisseurs sessions on the Wednesday night and Thursday lunchtime will be totally music free.

The whole thing gets under way at 6pm on Ash Wednesday evening and runs through to the Saturday night and will again stay open all day on the Friday and Saturday from 11am - 11pm.

So why not join us at the Winter-Fest for one of the highlights of the year and get rid of those winter blues once and for all at the best event in the Derby winter calendar. But do remember, it does get extremely busy in the evenings so please come early to



**For our established range & new beers every month, or individual house beers, contact Trevor on 01332 242888 or Mobile: 07887 556788**

avoid disappointment. Further details of the Festival can be found on the inside pages or check out the website [www.derbycamra.org.uk](http://www.derbycamra.org.uk) or e-mail [winterbeerfest@derbycamra.org.uk](mailto:winterbeerfest@derbycamra.org.uk)

**Gareth Stead**  
Chairman  
Winter-Fest 2005

## Cask ale strides in Ripley as the George returns to form

Nigel and Mo Eadie, formerly of the King William IV at Milford, are now installed at the George in Ripley, with the aim of transforming it into the premier ale pub of the town, a position it enjoyed some years back.

Choice is certainly on the menu. Permanently on is Hartington IPA with three guest beers, one from the jug. Guests to

date have featured Phoenix Wobbly Bob, Leadmill B52 and Ringwood Fortyniner.

The George opens all day Friday to Sunday and from 4pm on weekdays and is undergoing a refit and building up trade.

So why not get up to Ripley and support this enterprising licensee who is doing his bit, as Nigel says, in his 'Real Ale for Ripley' campaign.

**PSW Solutions Ltd**  
Unit D1, Breaston Industrial Estate,  
Breaston, Derbyshire, DE72 3DS.

**SUPPLYING QUALITY  
CLEANING & HYGIENE PRODUCTS  
TO PUBS, CLUBS AND RESTAURANTS,  
ACROSS THE MIDLANDS.**

Start saving money!  
Contact us now for more info or to see a Rep.  
Tel : 01332 872790 Fax : 01332 875102  
Email : [sales@pswsolutions.co.uk](mailto:sales@pswsolutions.co.uk)

**FALSTAFF  
FREEHOUSE & BREWERY**

**DERBY CAMRA  
PUB OF THE YEAR 2004  
RUNNER UP**

**BREWERS AND PURVEYORS OF FINE ALES  
SILVER HILL ROAD NORMANTON  
01332 242902**

Jan and Steve say  
Stop watching spaces  
and go to the  
**The Rowditch  
Inn**

246 Uttoxeter Road, Derby  
for a constantly-changing  
range of real ales

**Real Ale drinkers  
do it in the Ditch!**

# PUB NEWS

The Strawberry Tree in Edward Street, Derby has reverted to its old name, the **Masons Arms**. Real ale has yet to make a comeback but the return of the name to the Brotherhood is an outbreak of sanity to be welcomed. Guest beers are always available at the **White Hart**, Ambergate, usually one includes Adnams Broadside. The Dolphin in Derby is staging a charity weekend on the Friday and Saturday of 28/29th January to raise money for the Tsunami Disaster Appeal. There will be a mini beer festival with around 25 guest beers and the bar will be open until 1.30 am (There is a £2 entrance fee after 11pm). Some of the generous staff will be working for free at the event. Live music will prevail and proceeds go to the Red Cross. In Derby's West End **Masa** has opened in the former Wesleyan Chapel on Brook Street/Willow Row. Much restoration work has been done and now you can drink at a bar underneath the once temperance-celebrating pulpit. Good to see real ale available, Abbot Ale, although the price - £2.80 a pint may deter some. A recent plan to build a theatre complex on the north bank of the River Derwent in Derby city centre puts the long-term future of the **Royal Standard** pub in jeopardy.

## BISHOP BLAISE Pub Company

Up to six Real Ales

Food served every lunch and early evenings

Live music every Tuesday evening

Open until Midnight every night

114 Friar Gate, Derby 01332 257065

## Carnival over at the Wheel but the Funfair moves on

The Wheel at Holbrook has been sold to Punch Taverns, after the chain had pursued the popular freehouse for about two years.

Dave Tizard and Andrea Topliss have sold with a heavy heart. He said "I really didn't want to do it but they came up with this too good to refuse offer out of the blue. At least it will give me more scope and time to develop the brewery."

Dave's Funfair brewery has already been removed from the Wheel to Ilkeston and he hopes to have things up and running after Christmas, after some

building work at the new premises.

"I had only just installed a new copper" said Dave, reflecting on the speed of events. A new brew from the micro is the 4.5% Waltzer - "a traditional bitter" says Dave. Funfair beers will continue to be on sale at the Wheel as part of the deal and Punch have told Dave they intend to alter little in what is a fine example of how a pub should be run. Let us hope things do stay as they are.

New Wheel hosts have come from the Horse & Jockey at Wessington.



## Nigel breathes fresh life into Birmingham real ale scene



Former Derby licensee Nigel Barker has resurfaced again in Birmingham. The former Derby CAMRA chairman has taken over at the Wellington near New Street station and has already made a massive impact. With him at the pub is another exiled Derbeian Richard Green, who has himself been employed at over 100 pubs in his time! (Well it seems like it). Both were well known at the Dolphin and Silk Mill and share a love of Black Country beers.

## Quick turnover at Woodlark

Donny's return proved fleeting. A big reopening, a huge list of forthcoming ales, celebrity (unpaid) barstaff, what could go wrong?

Well it was a case of here today gone tomorrow at the Woodlark as Terry Holmes returned to Ireland as quickly as he arrived, due to family illness. In just over a week he had closed the pub once more.

As the giant shadow of the former Dolphin licensee faded from view, the Woodlark again reopened just before Christmas and normal service has been resumed.

David & Mary  
welcome you to

## THE ROBIN

Devonshire Drive  
Mickleover

Always 2 changing  
independent guest beers  
from the SIBA list  
plus Bass & Pedigree

Play area/beer garden  
large car park

01332 516684

## Your Health - Your Voice

What do you think of your Doctor, your pharmacist, your hospital? Are you happy with the care you receive?

Everyone has something to say about health and health services. The Patient and Public Involvement Forums are here to find out what people really think and to take action.

The aim of the independent Patient and Public Involvement Forums, made up of local people, is to enable patients and the public to influence the day-to-day operations of the health service, and address wider public health issues, from diabetes to MRSA infection, from smoking in public places to mental health.

There are PPI Forums throughout England, with the Carers Federation support office in Derby supporting 7 Derbyshire Forums for Central Derby, Greater Derby, Derby Hospitals, Derbyshire Mental Health Services, Amber Valley, Derbyshire Dales & South Derbyshire and Erewash.

It's exciting. But they will only be truly effective if people tell them about issues that concern them.

## Your Forum Needs YOU

We are continually recruiting forum members - everyone is welcome. Log on now to website, [www.cpfih.org](http://www.cpfih.org) to see how you can join those who are already making a difference.

If you have any health issues that you would like to bring to the attention of a PPI Forum, are interested in becoming a Forum member, or need any more information about the Forums, please contact the offices below:

## Derby Office

The Carers Federation, Bateman Court  
Bateman Street, Derby  
Telephone 01332 347528 Text n07739237444  
Email [r.lisle@carersfederation.co.uk](mailto:r.lisle@carersfederation.co.uk)  
[k.somes@carersfederation.co.uk](mailto:k.somes@carersfederation.co.uk)

# Across the border - Brunswick Boy is Alcazar bound

Popular Brunswick barman Simon Davey has left the Railway Terrace brewpub to work at the Fox & Crown at Basford, Nottingham, where he hopes to further hone his brewing ambitions at the tap of the Alcazar Brewery.

Simon is a young real ale enthusiast as he first foster his love of cask beer from his mother and father, long-time real ale drinkers. Simon says "I didn't like lager or alcopops as a teenager, and refused to buy in to the stereotype 'old men drink that stuff' image, which hopefully is changing."

An East Anglian lad, he drank ale in the Triangle Tavern at Lowestoft, where he also later worked and his first job came when Tim Dunford of Greenjack Brewery asked Simon to do a few jobs at the brewery at Oulton Broad.

Another job followed at Oulton Ales when that splintered from Greenjack. "There was a big con-

nection in the pubs in that area between live music and real ale" said Simon, "I am all for it".

Three years ago Simon came to Derby University and stumbled across the Brunswick. "I liked it immediately, great character and it became my 'Venus Fly-Trap'. Trevor Harris was still in harness then, but I started working at the Brunswick when Everards bought it in October/November 2002 and met the remarkable Graham Yates and developed a great working relationship with Nicola."

Simon's role started as pocket money but he developed a love for the trade and during his last year at Uni he realised he needed to make a decision whether to stay in the trade or not.

After talking to Graham and his parents, Simon decided to pursue a career in pubs and brewing but Graham had by then employed James and Ruth as managers and couldn't offer him

the full-time hours required.

He takes up the tale: "It was the hardest decision in my life to leave as I really wanted to stay at the Brunswick. It is a special place to me and has been a huge stepping stone."

Simon applied to Alcazar and was offered the

Assistant Managership of the Fox & Crown as well as helping out on the brewing side. Simon's first brew was New Dawn (4.5%). "I have a lot to learn", he says, "And am indebted to Graham Yates who encouraged me to go further in the trade."

The Fox is a continental pub with its Canadian brewer David Allen and Thai cuisine. On the Tram route (see the Nottingham CAMRA/Transport booklet *Beer By Tram*, Simon thinks the clientele are "Very different to Derby". The brewery won a first prize at Nottingham Beer fest with Conductors delight, known now as Double Chocolate Porter.

Whilst enjoying his new role, Simon hasn't completely disappeared from the Brunswick. He still plays darts for them on Monday nights - the team he set up himself.

The darts scene isn't exactly teeming with real ale pubs, in fact quite the opposite it is now extremely rare to see League darts played in pubs largely devoted to cask beer.

This fact makes Simon all the more delighted to recount the story that one team from a keg only pub came to the Brunswick and all requested smooth beer. On being told they didn't have



Simon Davey (left) mulling over a pint with his trusty mentor Graham Yates at the Brunswick.

any he tempted them to try the ale. They liked what they tasted, stuck with the beer all night and four of them came back at the weekend for more!

In the longer term Simon wants to get more involve on the brewing side at Alcazar as he develops with an eventual ambition to run his own pub with possibly its own brewery. The real ale scene needs young blood like Simon and we wish him all the best.

## Join CAMRA Now

### APPLICATION FORM

I/We wish to join the Campaign for Real Ale Limited and agree to abide by the Memorandum and Articles of Association. I enclose a cheque for £..... Rates are: Single £18, Joint £21, OAP/Unwaged/Under-26 £10 (£13 joint), Overseas £22 (£25 joint). If U-26 please add Date of Birth.....

Name(s): .....

Address: .....

..... Post Code .....

Date .....

Please send your remittance (payable to CAMRA Ltd) with this completed form to: Membership, CAMRA, 230 Hatfield Road, St Albans, Herts, AL1 4LW.



Derby Drinker



Instruction to your Bank or Building Society to pay by Direct Debit

#### The Campaign for Real Ale

Please fill in the whole form using a ball point pen and send it to:

The Campaign for Real Ale Ltd  
230 Hatfield Road  
St Albans  
Herts  
AL1 4LW

Names of Account Holders

.....

Bank/Building Society account number

.....

Branch Sort Code

.....

Name and full postal address of your Bank or Building Society

To: The Manager

Address

Postcode

Organisation Identification Number

9 2 6 1 2 9

Reference Number

.....

Instructions to your Bank or Building Society  
Please pay The Campaign for Real Ale Ltd. Direct Debits from the account detailed in this instruction subject to the safeguards assumed by the Direct Debit Guarantee. I understand that this instruction may remain with The Campaign for Real Ale Ltd and if so, details will be passed direct to my Bank/Building Society.

Signature

Date

The Sinclair family welcome you to the **Cross Keys**

**Market Place, Belper**

Bateman's Good Honest Ales XB, XXXB, Dark Mild and Bass Regular Guest Beer

**01773 599191**

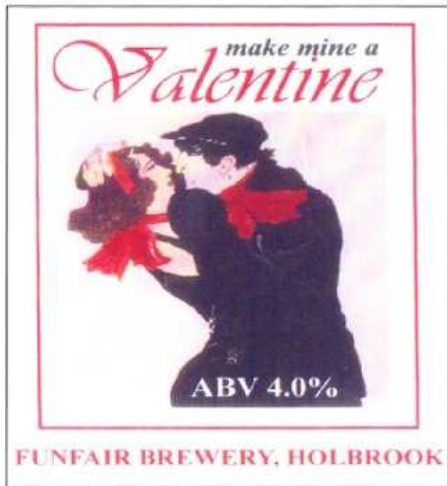
Derby CAMRA Pub of the Year 2003

**The Smithfield Meadow Road**

on the banks of the Derwent  
Quarter mile from Railway Station  
Quarter mile from Market Place

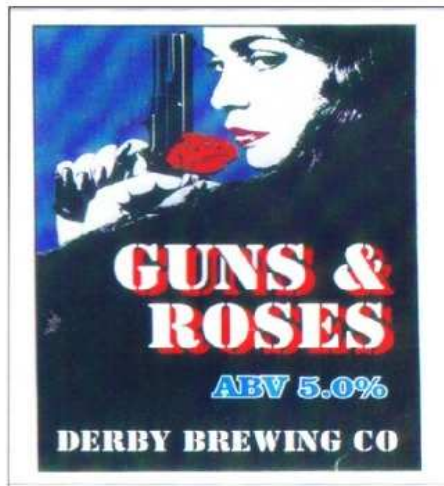
# Three Valentine special Festival brews for Derby Winter-Fest

This year our specially commissioned Festival beers are named on the theme of St Valentine's Day, which falls just as the Festival closes. Here are the three pumpclips, designed by Reg Newcombe, with his accompanying notes on the beers.



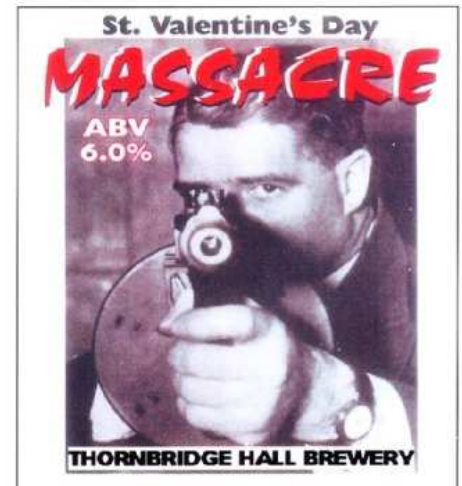
## VALENTINE ABV 4%

Traditionally you are not supposed to know where a Valentine comes from, but this one comes from the Funfair Brewery, recently of Holbrook. A lovely golden ale with a lingering afterglow.



## GUNS & ROSES ABV 5%

Not coarse and heavy like the hard rock band that featured at the Monsters of Rock at Donington in the 1980s, this richly red-dish ale goes down much more smoothly - but handle with care.



## MASSACRE ABV 6%

Not as dangerous as Al Capone whose gang wasted seven of Bugs Moran's men in Chicago on 14 February 1929, but not to be messed with all the same. A strong, dark brew from Derbyshire's newest brewer in Thornbridge Hall near Bakewell.

## Tokens

In order to speed up service at the bar, this year's Winter-Fest will see the introduction of tokens to pay for your beer. You will need to purchase a sheet of these once inside the building from the designated points. They are fully redeemable so you will be able to cash in any unused ones on the way out.

## Staff Needed

The Winter-Fest is staffed by an army of volunteers who give up their spare time to make sure the Festival runs smoothly but as always we need more help particularly on the busy evening sessions.

If you are able to offer this then please contact the Staffing Manager, **Roy Jones** on 01332 739507 or e-mail [roy.jones53@virgin.net](mailto:roy.jones53@virgin.net). As a reward you will be given beer tokens to spend at the Festival.

## Musicians Wanted

The Saturday afternoon session of the Derby Winter Beer Festival will be an open-mic session and musicians are invited to come along and do a song or two for some free beer and free entry to the Festival. If you are interested in performing then please contact **David George** on 01773 82134 or e-mail him on [david-george@belperde56.fsnet.co.uk](mailto:david-george@belperde56.fsnet.co.uk) for further details.

## CONTINENTAL BEERS

Achel Blonde	Archel Abbey	Belgian	8	light
Scaldis Noel	Dubuissou	Belgian	12	amber
Duvel Duvel-Moortgat		Belgian	8.5	light
Timmerman Peche	John Martin	Belgian	5	light
Blanche De Bruxelles	Lefebvre	Belgian	4.5	light
Liefmans Framboise	Liefmans	Belgian	4.5	brown
Liefmans Kriek	Liefmans	Belgian	6	brown
Rocheport 8	Rocheport Abbey	Belgian	9.2	dark
Bohemian Golden	Herold	Czech	5	light
La Trappe Blond	La Trappe	Dutch	6.5	light
Erdinger Alkoholfrei	Erdinger	Germany	0	light
Kuppers Kolsh	Kuppers	Germany	4.8	light
Kolsh Maisels Weisse	Maisels	Germany	5.7	light
Oechsner Premium Pils	Oechsner	Germany	4.9	light
Export Guinness	Guinness IR	Ireland	8	dark
Anchor Christmas	Anchor Steam	USA	5.9	

## Short run print

NOW AVAILABLE ON OUR DIGITAL PRESS

MENUS | POSTERS | POINT OF SALE | FLYERS

COLOURSTREAM



**You could advertise Your pub in this box!**

Full-colour Editions, huge distribution area

Contact Pip on 07779341705 to book **YOUR** own space!

# Winter-Fest Beers - A truly rich selection of delights

It's a tough job, but somebody has to do it. The beer orderers have been slaving over a cool pint mug selecting a variety of the best of British real ales. They've tried to balance the traditional stronger and darker winter beers (stouts, porters and barley wines) with the popular pale and golden ales. There's plenty of variety for all!

Some of the beers come from far away, others from some of Derbyshire's finest, but sometimes hard to find breweries - and even some from Nottingham. On the Derbyshire front, this may well be your first chance to drink beer brewed at *Thornbridge Hall*. There's a contribution from the *Funfair* brewery, currently in transit from Holbrook to Ilkeston. If you don't think Pedigree is what it used to be try their *Waltzer*. *John Thompson's* beers are available too, we reckon the Porter is probably the best beer of its type in the country.

Now where was pale beer first brewed? Burton, London, Pilsen? Derby, that's where, in 1680. A century later London caught up, and later still, Burton. We have chosen three modern pale ales from Derby breweries that you can compare - Triple Hop from both the *Brunswick* and the *Derby Brewing Company* and *Fistful of Hops* from the *Falstaff*. See how the Derby boys compare with hophead Sean Franklin's beers from *Rooster's* brewery in Knaresborough.

We've also scoured the country for India Pale Ales - beers first brewed to be taken to India in sailing ships - very strong and very hoppy. Leave *Downton* IPA, *Durham White Magic* and *Alcazar* Bombay Castle towards the end of the evening - your taste buds will be good for little except curry afterwards. Some of the beers come from small breweries run by enthusiastic ex-home brewers who have taken

the plunge and now brew commercially - try ale from Roy Crutchley's garden shed (*Hogley's*) or David Allen's rather posher show brewery *Alcazar* - you'll never think of "homebrew" the same way again. *E&S Elland*, *Foxfield* and *Holme Valley Ales* too, if you're quick.

There are even some foreign



beer styles brewed in that most cosmopolitan of metropolises - Wakefield. If you fancy some wheat or rye beer and there's a *Tigertops* beer available when you arrive - go for it, it won't last the night. Newcomers to Derby Festival *Green Jack* have provided some interesting fruit beers. We've chosen some "foreign" sounding beers from *Enville* of Stourbridge and the Celtic fringe hasn't been forgotten with *Brains* and *Arran*. The latter's *Arran Dark* is a traditional Scottish heavy, so Alastair at the Flowerpot isn't on his own.

Regular readers of the *Drinker* will spot that there's an "in" joke being continued with Polly's Folly and Norwegian Blue from *Buffy's*.

We have arranged for some beers to be matured for a little longer than is usual these days to show what difference a couple of extra months in the cask can do. Try *Falstaff* The Good, the Bad and the Drunk, *Alcazar* Maple Magic, *Durham* Benedictus and *Temptation*, *Sarah Hughes* Snowflake, *Adnams* Tally-Ho! or *Derby Brewing Company* 12th Night.

There's lots more from local

heroes *Hardy and Hanson's* (*Kimberley*), *Belvoir* and *Castle Rock* (these two with brewers who worked at Shippo's), *Burton Bridge* and *Tower* from erstwhile brewing capital Burton-on-Trent. Shed a tear for Cloughie with "Old Big 'Ead", even if it is brewed at *Leek* in Staffordshire. Further afield, *Bateman's*, *Holden's*, *Nethergate*, *Oakham* and *Sarah Hughes* have all been chosen to bring you a variety of top-quality ales. Plus Wyre Piddle beers courtesy of the Babington Arms.

So how are you going to tackle it? Start at the bottom and work up - the stronger beers will kill your taste buds. Highly recommended light bitters from *Arkell's* of Swindon will quench your thirst while allowing you to keep going longer. Who needs Viagra? If you think don't like dark beers, give 'em a try. Adjust your alic band and ask for a wee taste of *John Thompson* Porter. And do finish with one of the cracking strong ales. We've got ten at 7% and over - you're not going to see the likes of that until this time next year.

We have about 90 beers in all and only 30 hand pumps, so not everything will be available at each session. If you want to work your way through this lot do come along to the less busy sessions on Wednesday and Thursday or drop in at a lunchtime - then come and let your hair down on Friday and Saturday!

Come and visit

## JORROCKS

One of Derby's most historic pubs

41 Iron Gate, Derby

Try our range of traditional real ales in a warm and friendly atmosphere

Bar snacks available daily

**Robinson's Bitter, Pedigree plus guest**

## Admission Times and Prices

Wed 9th Feb - 6-11pm - £2

Thurs 10th Feb - 11-3pm - Free, 6-11pm - £4

Fri 11th Feb - 11-6pm - £2, 6-11pm - £5

Sat 12th Feb - 11-6pm - £2.50, 6-11pm - £5

(Free to CAMRA members and 50% off to NUS card holders at all sessions)

## Brunswick Inn

Free house & Brewery  
Railway Terrace, Derby

Cask Ales from 16 handpumps

01332 290677

Derby CAMRA Pub of the Year 2004

## Derby Drinker

*Derby Drinker* is distributed free of charge to pubs in and around the city. Published by the Derby Branch of the Campaign for Real Ale and printed by Colourstream Litho, Riverside Road, Pride Park, Derby.

Edited by Pip Southall: 69c Uttoxeter New Road, Derby, DE22 3NL. Tel: 07779341705 (Mobile)

email:pipsouthall@ukonline.co.uk  
website:www.derbycamra.org.uk

Advertising rates: Front Page £45, Others £40. Larger adverts negotiable from £55. Discount for advanced payment.

NOTE: These rates are subject to review over the new year, since the introduction of colour to the Drinker.

Advertising Manager: Please contact the editor.

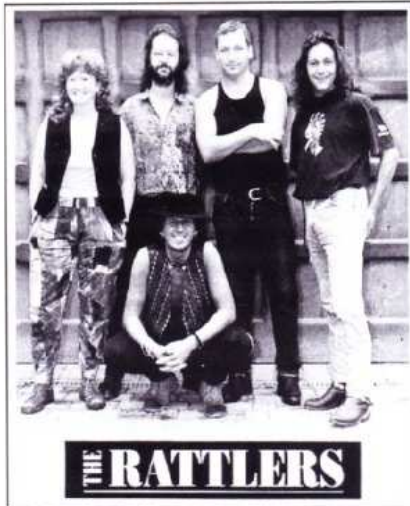
Other contributors and helpers for this issue: Les Baynton, Alex Brown, David Edge, Ralf Edge, Reg Newcombe, Gareth Stead, Marcus Smith, Jim Suter, Julian Tubbs, Peter Webb.

©Derby CAMRA 2005. Opinions expressed in *Derby Drinker* are not necessarily those of the editor, nor of the Campaign for Real Ale Ltd.

# Winter Festival Entertainment - Permission to Rock

The Derby CAMRA Winter-Fest has a growing reputation of bringing you the best live music around and this year is to be no exception. From the Festival that brought you Coldplay, REM, Stereophonics and U2 tributes in the past sees perhaps its best ever line-up this year. So do enjoy but remember to come early as the evenings reach capacity rather quickly.

After the quiet beer connoisseurs sessions of Wednesday evening and Thursday lunch the



'Festival that Rocks' really kicks off on the Thursday night with the return of local group the Rattlers (above) - reformed & regrouped especially for the occasion.

Their energetic live performances have been a festival highlight in the past and they are sure to get the Festival rocking again

this time with a selection of their old favourites. So, if you've been missing your Rattlers fix over the last few years then this could be the night for you.

The Friday afternoon entertainment is still being finalised but the evening will witness a tribute to one of the biggest bands in the world over the past two decades - U2, who are back with a vengeance thanks to a new chart topping album *How to Dismantle an Atomic Bomb* and a major world tour. So what better

time to have one of their tribute bands on than this year and U2UK (bottom right) are certainly one of the Country's top tributes to the Irish rockers.

Local lads, the members of U2UK pride themselves on being devoted U2 fans that authentically re-create the unmistakable 'Live' U2 sound, look and feel that has been described by some as 'like being at a real U2 show'.

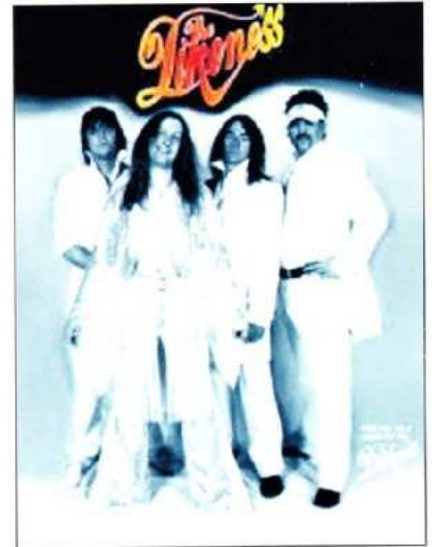
Performing songs spanning U2's entire career from *Pride (In the Name of Love)* to *With or Without You* to *Elevation* and *Vertigo* the U2UK show has been amazing audiences throughout the UK and we are delighted to have them on at the Fest this year. Yahweh !!

Saturday afternoon sees the

return of our popular open-mic session with musicians invited to come along and perform a few numbers for a free pint or two while Saturday night witnesses probably the mostly eagerly awaited performance of the whole Festival when Darkness tribute band the Likeness (right) take to the stage for what promises to be a show to remember.

The Darkness themselves have taken the country by storm over the last year or so with a quadruple platinum album, *Permission to Land* and an amazing arena tour featuring a multitude of pyrotechnics and singer Justin Hawkins playing his guitar on a flying tiger.

Well, we can't quite promise you the flying tiger but we can promise you an excellent night from their spandex, catsuited tribute - the Likeness who will be performing the likes of *I believe in a Thing Called Love*, *Growing on me* and *Love is only a feeling* with the same passion as their mentors.



Miss it at your peril. Supporting the Likeness will be the bands alter ego, Alienesque who will be performing a set of classic rock numbers to get you warmed up before the main event itself.

So, there you have it, undoubtedly the best ever line-up of any Derby Festival and one that's sure to get you rocking long into the night.

**SEE YOU THERE!**



## Out of Our Circulation Area? Having Difficulty Getting Your Copy?

Postal Subscriptions to *Derby Drinker* are available. Cheque Payable to Derby CAMRA for £2.50 for 5 issues.

Write to: Lynn Brown, 10 Newton Close, Belper, Derbyshire. DE56 1TN.

The cost will cover envelopes and stamp charges which will vary depending on the weight of the issue.

Visit our unique cellar bar at

## The Flowerpot

King Street, Derby  
Tel (01332) 204955

Try our continually changing range of real ales in the warm surroundings of a traditional town pub

Hot food Monday to Saturday  
Sunday lunches a speciality

**LARGE FUNCTION ROOM**

## The Furnace Inn Duke Street, Derby



Kimberley Mild, Bitter,  
Olde Trip

# Is The Sykes Safe?

Anyone who visits the Thomas Sykes pub on Anglesey Road in Burton quickly recognises it as a unique drinking venue full of character. Now a listed building on the site of the old Thomas Sykes and later Heritage Brewery it is somewhere special, very different from the pub chain outlets that now surround us.

The cobbled floor, high ceiling and fascinating breweriana all over the walls add to its charm. The regular Bass and Pedigree are joined by at least two guest beers supplied by local beer agency - Beer My Guest who also supply the unusual beers for the recent festival there. Jacky of

BMG sees a threat in the near future to what she feels is 'Burton's only true free house'. The site is about to become a housing development, yes you guessed, more 'stylish city living apartments' in an historic brewing setting. Although the building is listed there is no guarantee of it surviving as a pub.

The situation is unclear at the moment but do 'watch this space' for further news and be prepared to campaign on behalf of a classic pub, which surely we don't want to lose. Also pay them a visit, only a short journey from Derby.

Les Baynton

## CAPTION COMPETITION

### Where the Wild Hops Grow

Wasn't that a song by Nick Cave and the Bad Seeds? Well it should have been. Anyway this photograph depicts wild hops growing freely on a telegraph pole somewhere in South Derbyshire.

Send your caption by post phone or email to the editor and the best one will receive two free pints at the Derby Winter-Fest in February.



### Big Screen TV System

Big screen TV system comes complete with a five foot wide pull down screen, 30 watt mixer/amplifier, highspeed video player, twin speakers, single lens Davis projector and cables.

**Cost £3500 will accept £2200**

Also available is a Lincat Super Chef grill for just £100.

**Telephone 07950 023640**

### Cask Marque at the York

Congratulations to Melanie McCabe of the York Tavern, who has been awarded Cask Marque status, just before the Christmas break.

Mel and Dennis have had some interesting guest beers on, the Christmas beer from Caledonian was a particularly popular ale, especially for a darker brew in an area where pale real ale increasingly seems to be the predominant ale drinkers choice.

Forthcoming guest beers for the new year include Titanic Full Steam Ahead, and beers from Wyre and Rooster breweries.

## Derby Beer Festival Cellarman takes control at Milford



Andy Brett is the new licensee at the King William IV at Milford, taking over from Nigel and Mo just before Christmas. Aside from his beer festival work, Andy has been keeping a fine pint at the Boundary, South Normanton for a year or two prior to his switch to the Leadmill pub, where he is supported ably by his brother Carl and his father David, all CAMRA stalwarts.

## Microbrewery Corner

Taking a look at what's happening at the independent breweries in and around Derby



### FALSTAFF

New beer theme for 2005 is Shakespeare, aptly given the pub name. First brew out second week of January is As You Like It a 4.5% beer, as is Invader wholly brewed by Falstaff for the Babington Arms. Both beers have been brewed by Jim Hallows and he promises "roughly one special per month".

### WHIM

Black Christmas again featured in some of the well-known real ale pubs in the area in December.

### DERBY BREWING CO

Twelfth Night was a Christmas brew which got around in the free trade, the editor sampled it at the Hardinge Arms, Kings Newton, who have taken most of Trevor Harris's beers. Sanity is another recent brew.

### JOHN THOMPSON

The Ingleby brewery produced a one-off Christmas beer in December. The 5% St Nick's (see pumpclip), incorporating the patron saint as well as landlord Nick Thompson, was an excellent drop and rapidly left the barrels.

### SHARDLOW

The Christmas brew Tis The Season was heartily received.

### FUNFAIR

As reported elsewhere in *Derby Drinker* Dave Tizard has relocated to Ilkeston and hopes to be up and running by the time you read this.

### LEADMILL

Richard Creighton brewed a one-off called Verrizano Narrow Bridge a pale 4.5% beer to commemorate the 40th anniversary of New York Harbour bridge!

## The Steampacket



**Derby Road,  
Swanwick**

Regular beers from Adnams, Jennings, Young's and Tetley plus a guest.

50 yards from Swanwick  
Red Arrow bus stop  
**01773 602172**

## King William IV first Beer Festival

The following details can now be confirmed for the 1st King William IV Beer Festival.

The festival at the Milford pub opens on Friday 28th January at 5:00pm, through to Sunday 30th January. Open ALL DAY on Saturday and Sunday. There will be approximately 20 beers available all served in lined-oversized glasses!!

Entertainment will be provided from the lovely voice of Una (Friday), plus Chain Gang (Saturday) and Captain Plastic (Sunday). Limited food will be available in the form of freshly filled rolls, sausage rolls etc. at what promises to be a lively first attempt

## Exeter Unsnugged ?

There was a time when practically every pub worthy of the name had a snug. This, as the name implies, was a small room tucked away beside or behind the bar, secluded from the busy bustle elsewhere. It was usually, but not always, occupied by the pub's more mature regulars, who were not only men. Remember Ena, Minnie and Martha in the snug of the Rover's Return?

Then along came the 1970s and that mad fad for open-planing (it should have been un-planing) when interior walls were knocked out to make one shapeless space out of what had previously been several rooms of different character, each with it's own set of regulars. It was a move away from diversity towards uniformity - something that's been happening in other places than pubs.

Just a few of the old-style snugs did survive, however, and still do.



An excellent example in a rural pub is behind the bar of the **Hollybush** at Makeney. Others survive in the **Malt Shovel** at Spondon, the **Old Dolphin** in Derby and - until recently - the

**Exeter Arms**, which has now been (partially) opened up.

But why, we may wonder, was this considered necessary? It cannot have been because the cosy seclusion was uninviting. Not so very long ago you would frequently have had some difficulties finding a seat in there, especially in winter when the fire made it more than usually welcoming. No: it appears to have been done in the mistaken belief that opening it up would make it more attractive to more people, and easier to keep an eye on them - the very reason why so many multi-roomed pubs were opened out in the 1960s and 70s, and not for the better.

Well, as they say there is no accounting for taste and - believe it or not - there are even some who think that what has been done to the snug of the Exeter is actually an improvement. But for those with more traditional values who feel there are now too many soulless superpubs, and too many



shapeless one-roomers trying to imitate them, the unsnugging of the Exeter Arms will be seen as a sad loss.

**Reg Newcombe**

*Derby Drinker* asked Peter Wild, landlord at the Exeter to respond to criticism of the alterations, which basically involve the knocking in of a picture window into the snug and a reduction of the settles (see left).

Peter, 14 years at the Exeter, said that "Although the snug got busy at weekends, they were finding that nobody sat in there during the week. Now people are using it as it has been brought into being part of the pub. Due to fat cat brewery rents the days of having a cosy snug, not bringing in any revenue are long gone.

He added that "If I were to win the lottery I would brick the hole back up again and invite Reg down to lay the first brick!"

## All well at Sitwell

The Sitwell Arms, Horsley Woodhouse is doing good things for beer. Landlord Gary Jones has been there since October. As a lessee of Avebury Taverns he has access to the SIBA list, though Pedigree is his biggest seller in this former Bass house. He has closed the restaurant and is concentrating on beer sales, a brave decision for an isolated pub. Gary worked long term at the

Brunswick and has subsequently worked at the Coach and Horses, Horsley before taking on the **Royal Oak, Marehay. Last night's guest was St Austell Tribute.**



Fully Computerised Stock Control. Providing Stocktaking, specialist in Business Transfers & Inventory Valuations

Free phone: 0900 011 2827 E-mail: info@thestocktakers.com



"We will Maximise your Profitability"  
Our fees are highly competitive, our services are cost effective